

LIGHT DECOMPOSITION TRIANGLE

Ver 1.4 (2017-9-4)

1 录

					1
		1.4 (2017-9-4)			1
1					2
	1.1				2
	1.2	B			2
		1.2.2			5
	1.3	3 D			7
	1.4	C			10
2			E	D	11
	2.1				11
	2.2				12
	2.3	C			13
	2.4	B			14
	2.5				15
	2.6	C	C		16
	2.7	C			17
	2.8	C	102C		18
	2.9	C	C		19
3	A				20
4	C	D			21
5					21
6					
	6.1	B			22

2 Overall design

2.1 Introduction

B

30-40

2-3

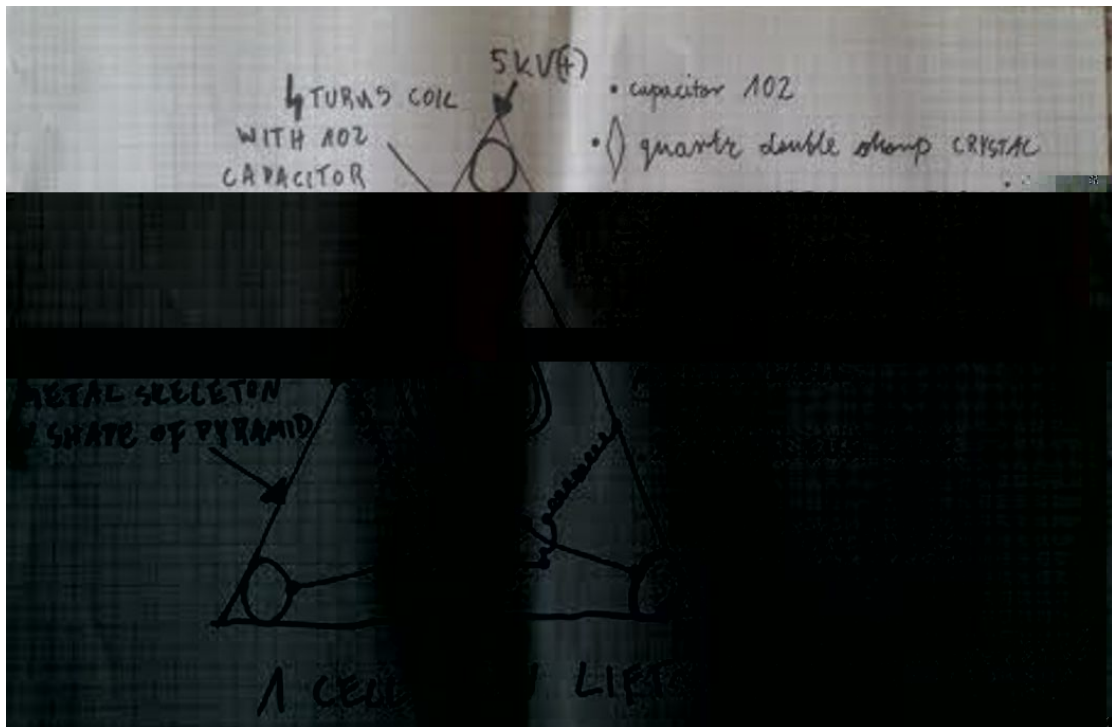
2.2 Basic Principles

B

30-40

2-3

1.



1

2.2.1 Physical Photo

4.





4

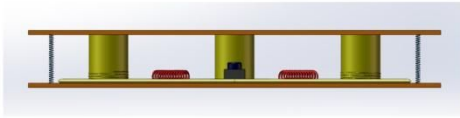
(:// . . /

/)

2.3 3d Drawing

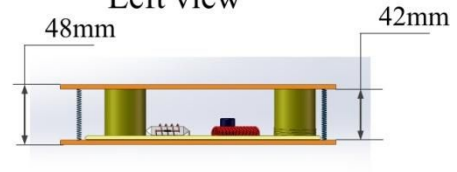
3D D

Front view

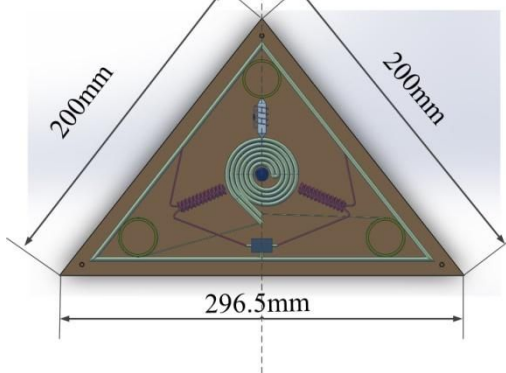


5

Left view

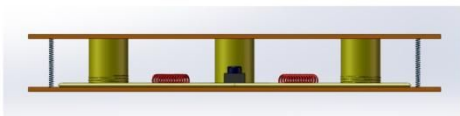


Top view

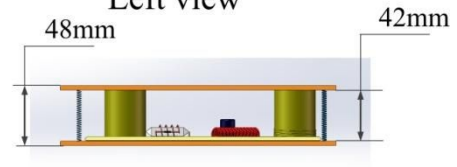


6.

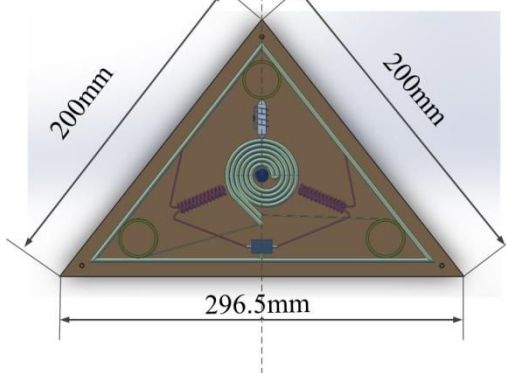
Front view

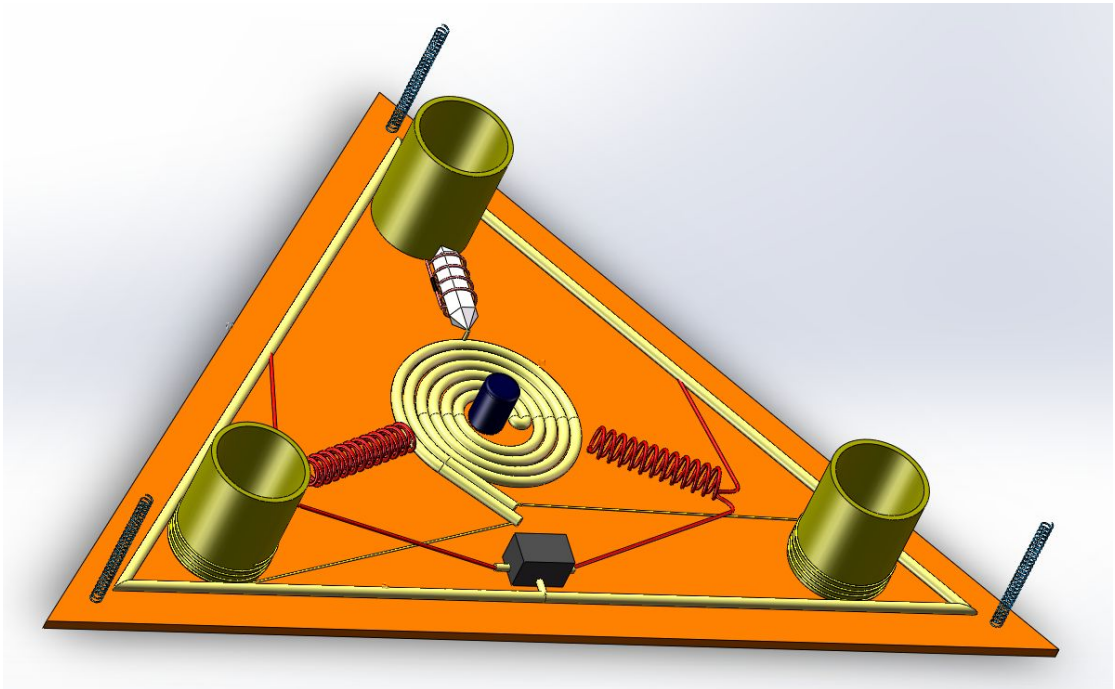
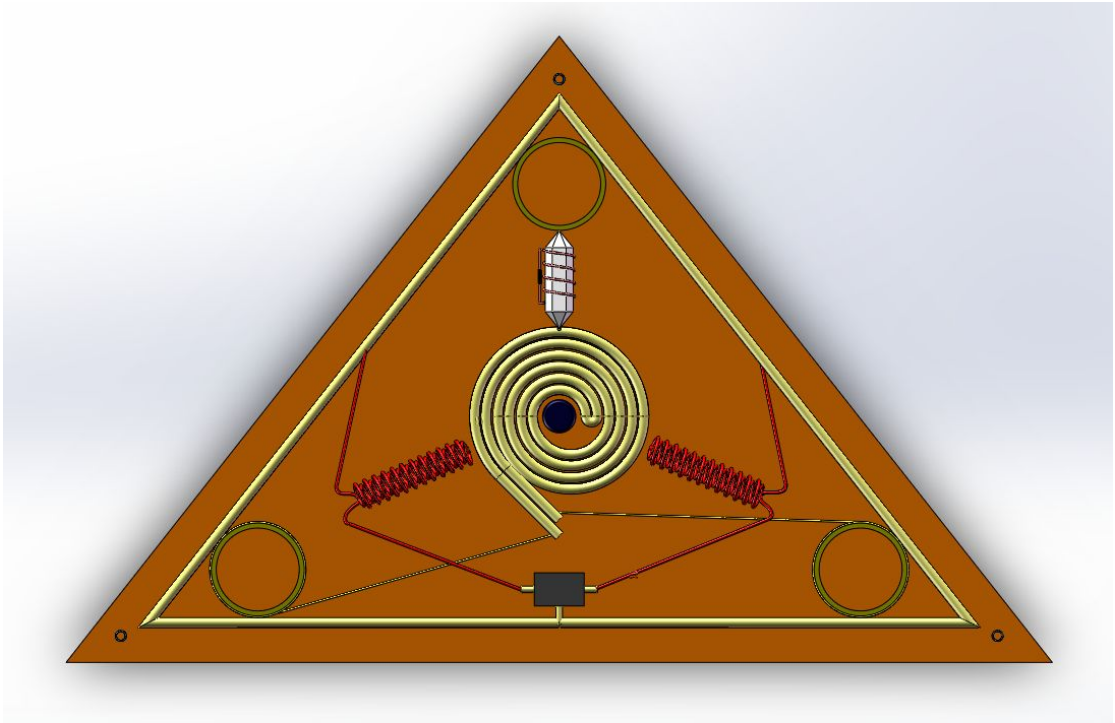


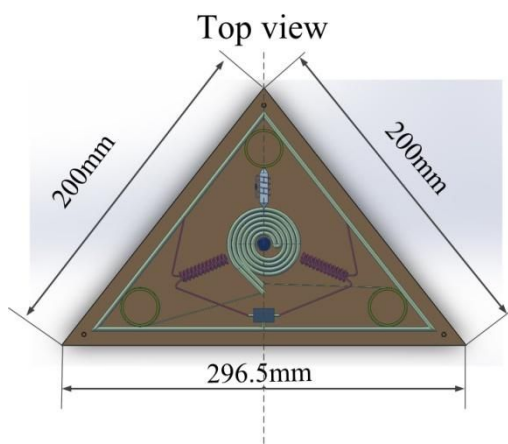
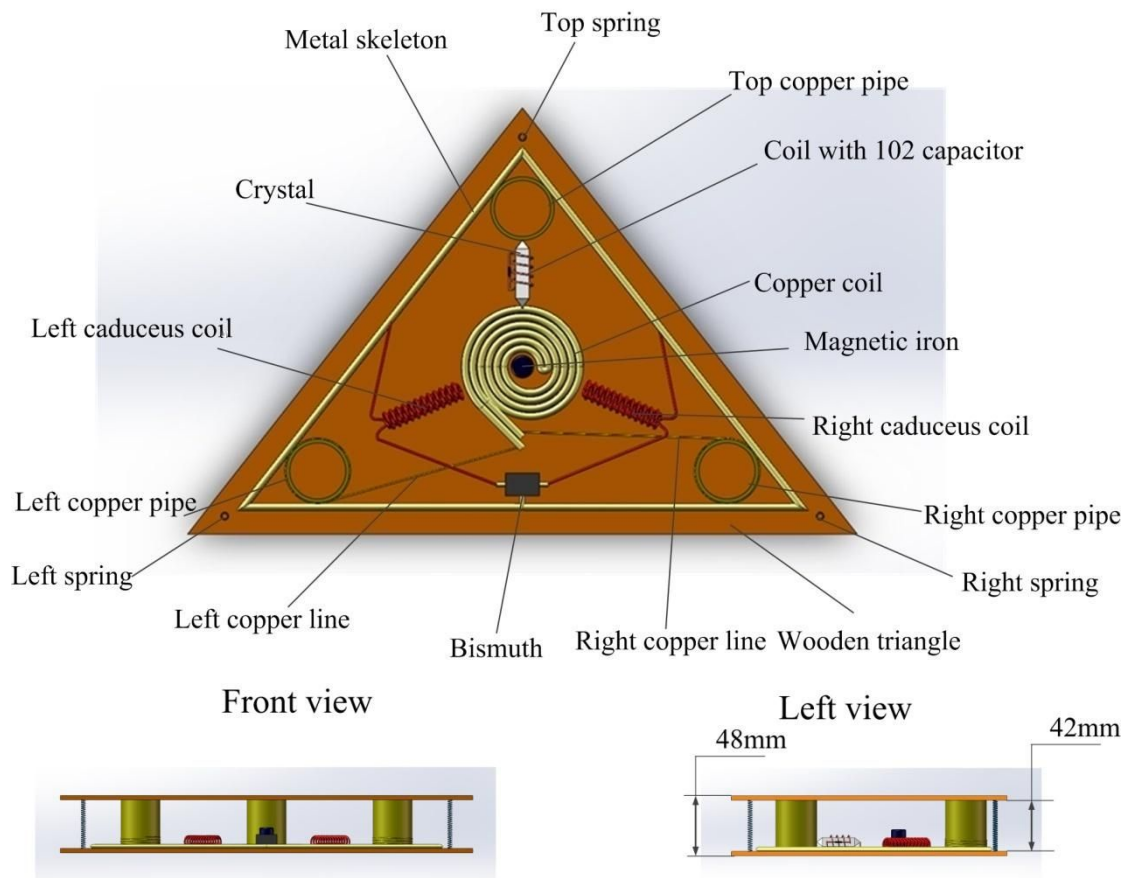
Left view



Top view







3 Mechanical and Electronic Parts

Drawing

3.1 Wooden Triangles

2

,

7.

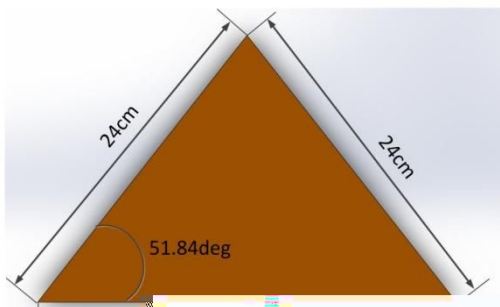
Front view



Left view



Top view



Material: **Wooden**
Number: **2**

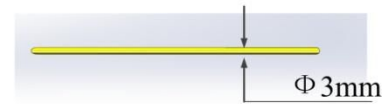
3.2 Metal Skeleton

8.

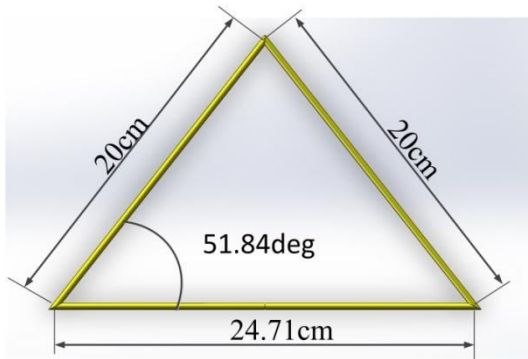
Front view



Left view



Top view



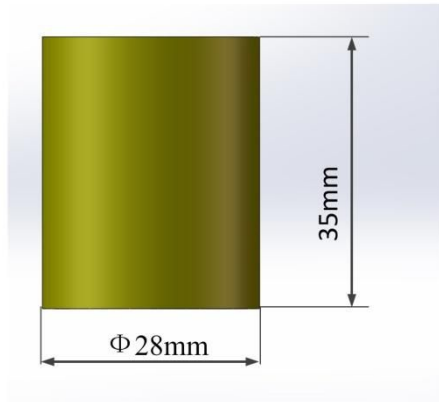
Material: **Copper**

3.3 Copper Pipes

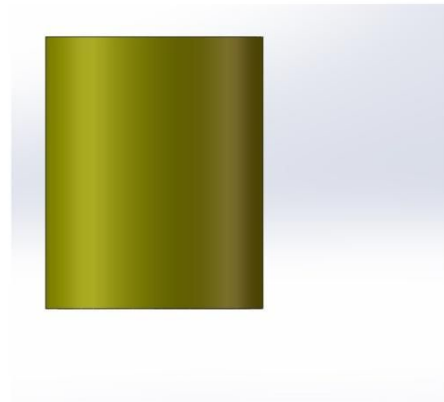
C

9.

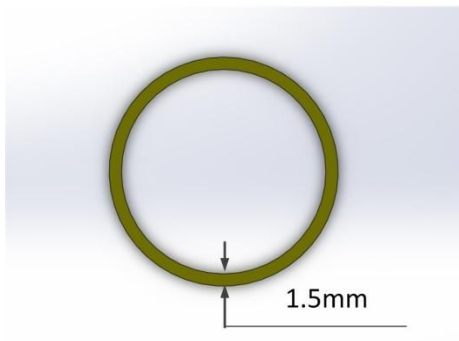
Front view



Left view



Top view



Material: **Copper**

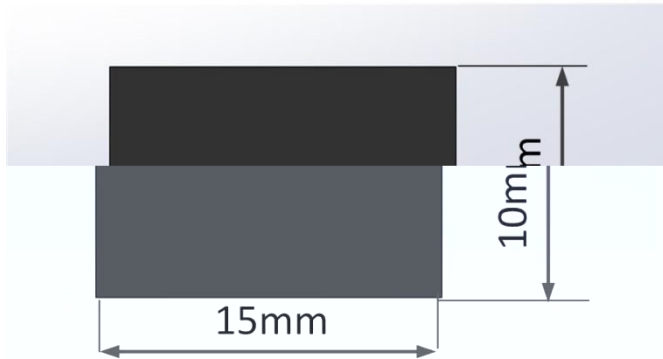
Number: **3**

3.4 Bismuth

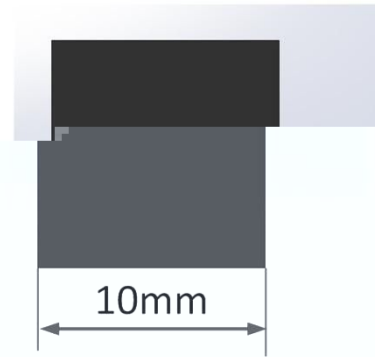
B

10.

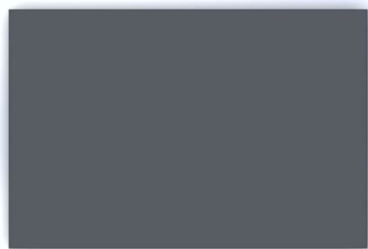
Front view



Left view



Top view



Material: **Bismuth**

3.5 Magnetic Iron

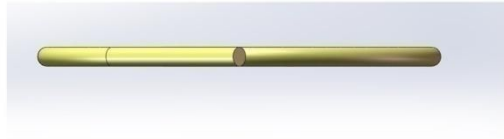
11.

3.6 Copper Coil

C

12.

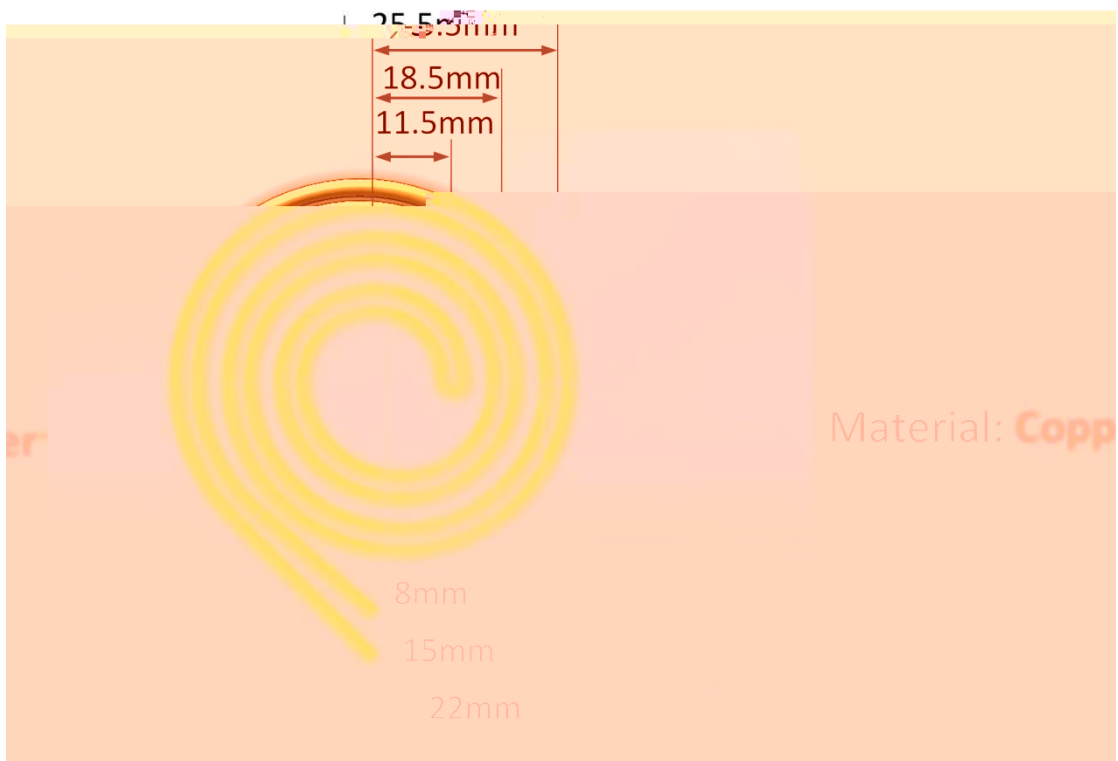
Front view



Left view



Top view

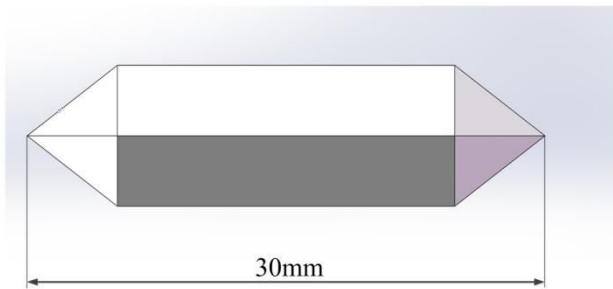


3.7 Crystal

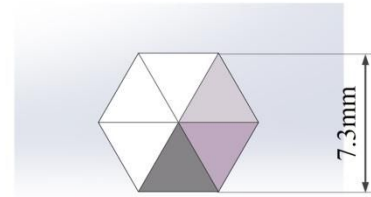
C

13.

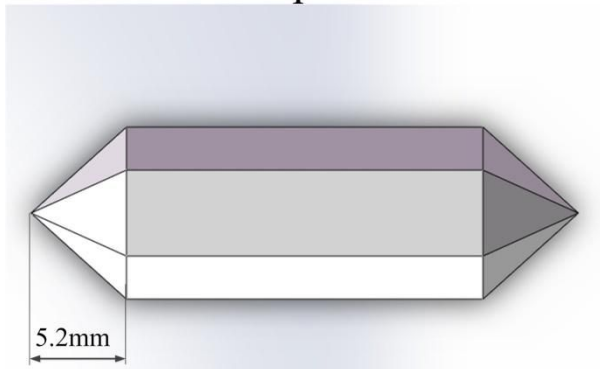
Front view



Left view



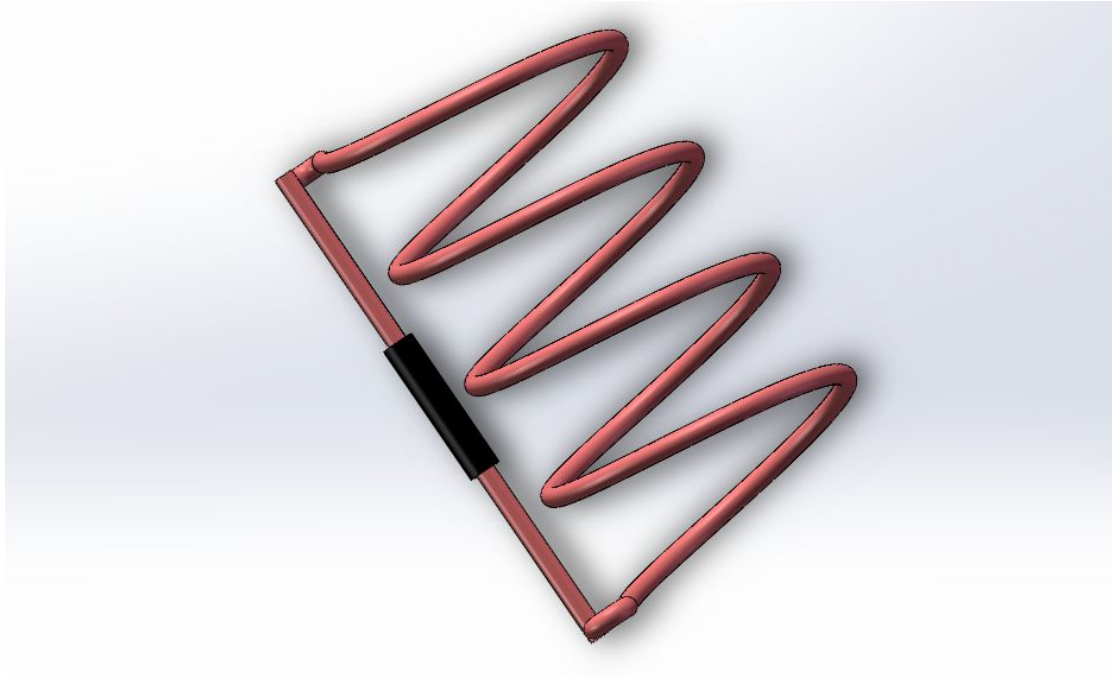
Top view



Material: **Quartz Crystal**

C 102 14.

C 102 14.



14 102

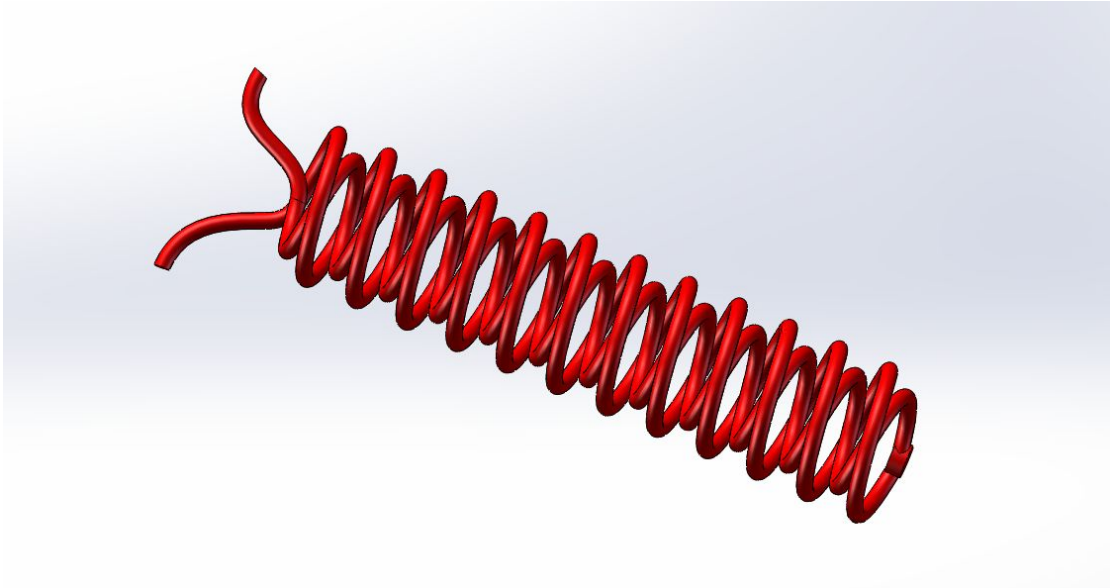
0.6 mm.

4 turns.
102 capacitor.
counter-clockwise around the crystal.

3.9 Caduceus Coil

C

15.



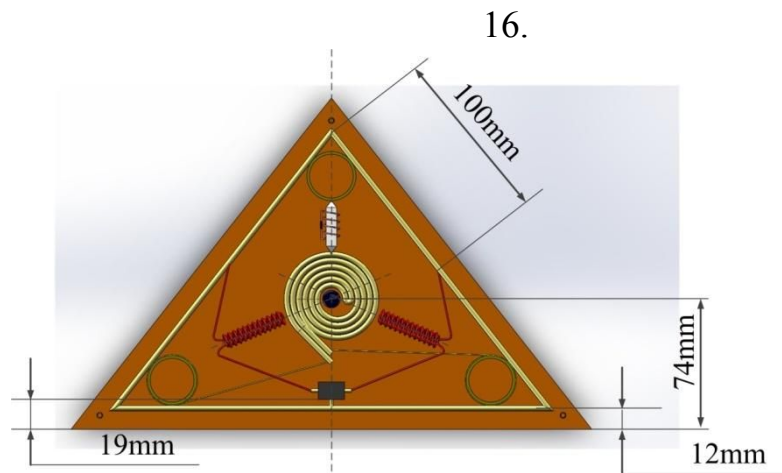
15

0.9mm.

12 turns.

2.

4 Assembly

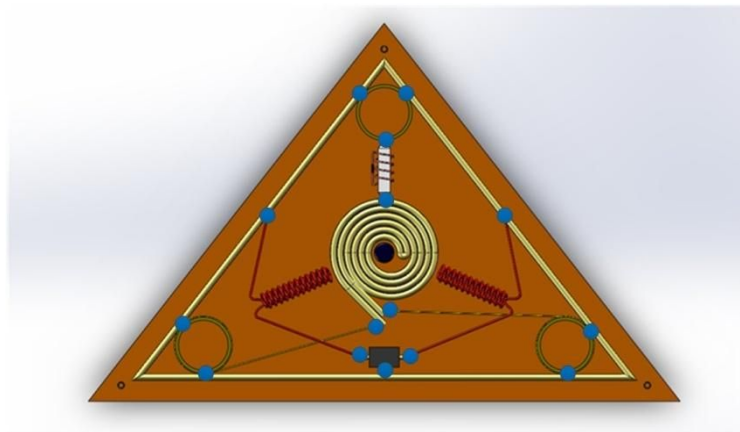


The top of caduceus coil should
be directed to the magnet

16

E

17.

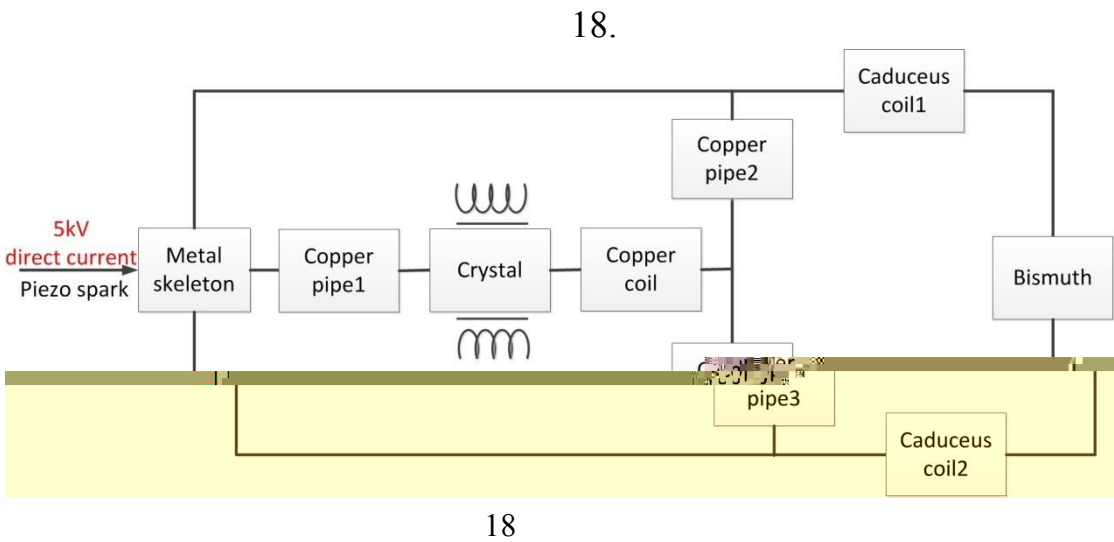


**It should be electric connection
where the blue circular shows.**

17

C

5 Circuit Diagram



6 User's Guide

6.1 Bismuth

E A A C A B E E
A E BE . E E A BA
10 *10 *15



)